

Technical Guide for Upgrading to Minitab Engage™ 6.1

Companion® by Minitab is becoming Minitab Engage™. Here is what you need to know:

Minitab Engage 6.1 released on March 24 so web-based users will immediately see Minitab Engage referenced on the web. Desktop users will not see any reference to Engage until the desktop update is installed on their computer. The default page is now Workflow, to make it easier for first-time users to find where to submit ideas for projects.

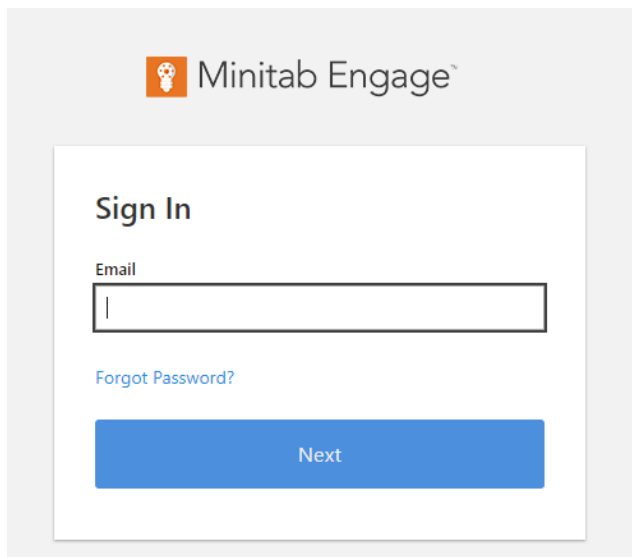
To Upgrade to Engage 6.1:

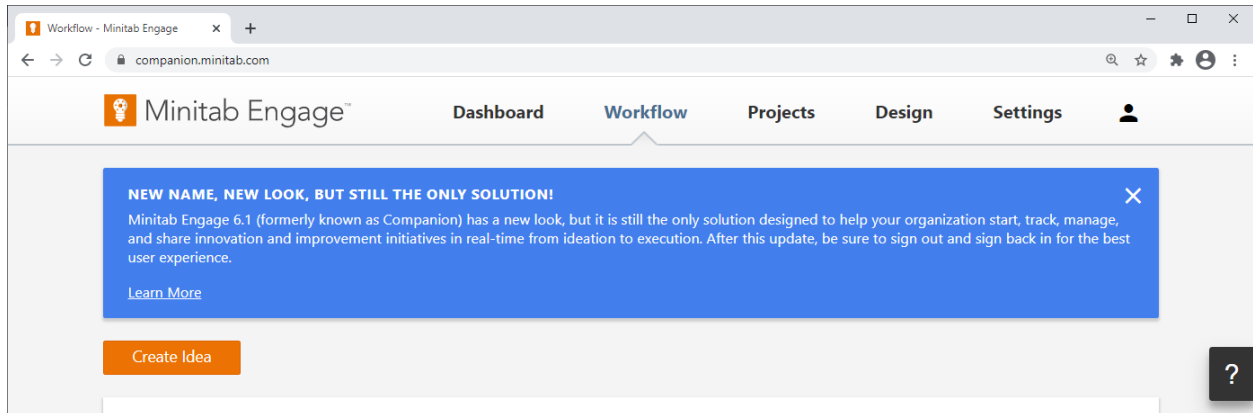
1. IT should update their allow list to include <https://engage.minitab.com> (if applicable).
2. License administrators should update subscription to 6.1 in the [License Portal](#).
3. Desktop users should install the 6.1 update on their computers.
4. Data architect should create and publishes a sandbox on the web.

Engage 6.1 Release

On Wednesday, March 24th, Engage 6.1 was released.

Users will immediately see Minitab Engage referenced on the web:





They will also see some new Engage 6.1 functionality:

1. The default page is now Workflow, to make it easier for first-time users to find where to submit ideas for projects.
2. Data architects will see a new Settings tab, where they can manage site-wide settings like the fiscal year and default dashboard report.

Desktop users will not see any reference to Engage until the desktop update is installed on their computer.

To Upgrade to Engage 6.1:

1. IT should update their allow list to include <https://engage.minitab.com> (if applicable)

If your organization uses an allow list or whitelist for specific URLs, have them add the new Engage URL.

2. License administrators should update the subscription to Engage 6.1 in the [License Portal](#)

In the License Portal, license administrators can update their subscription to Engage 6.1:

Minitab Engage™ Desktop App

Companion by Minitab® 5.5.0

Deployment Preferences
Automatic
[Edit Preferences](#)

Minitab Engage™ 6.1.0 desktop app is now available!

Your subscription is set to automatic deployment. To update, do the following:

1. Before you upgrade the subscription to the new version of the software, ensure that your computers meet the latest [system requirements](#).
2. (Optional) To validate the software, [download the new version](#).
3. Click Update Subscription. Users will need to manually download the update.

Note: This update does **NOT** support Windows 7 or 8.0. If any users in your organization are still using Windows 7 or 8.0, you should **NOT** upgrade your subscription until all users have switched to a supported OS (Windows 8.1 or 10). Upgrading your subscription if some users are still on Windows 7 or 8.0 will result in file compatibility issues and subscription errors.

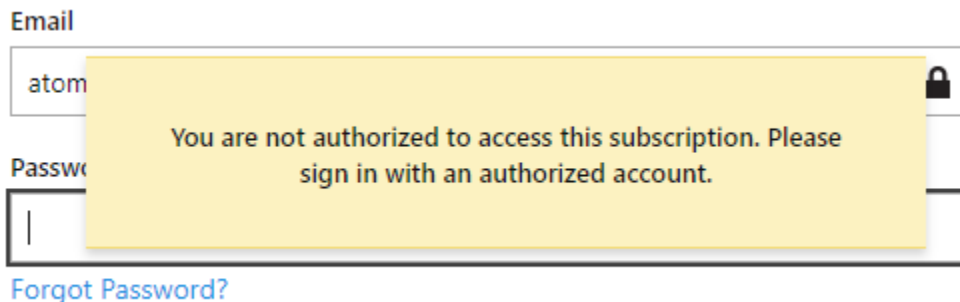
Update Subscription

Once they do this, users will see the following functionality on the web:

1. New and improved Workflow page
2. Idea submission on the web (requires add-on)
3. New users can be assigned Idea Submitter role (requires add-on)

NOTE: Users can now access the Engage 6.1 web app by navigating to <https://engage.minitab.com>. However, <https://companion.minitab.com> will automatically redirect users to <https://engage.minitab.com>.

NOTE: If the subscription has been updated to 6.1 but the desktop app update has not yet been installed, desktop users will not be able to log in:



3. Desktop users should install the 6.1 update on their computers

Depending on your subscription's deployment preferences, you will either need to deploy the Engage 6.1 desktop app update to your users or have them download and install the update themselves.

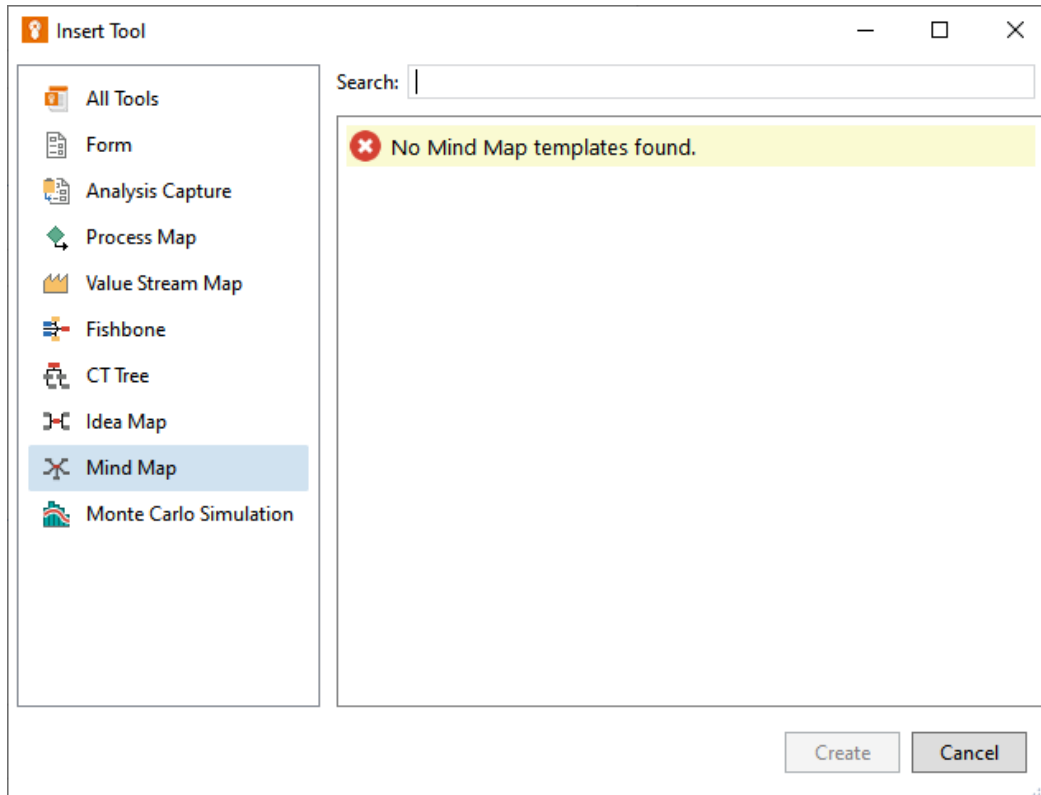
Once the desktop app has been updated to Engage 6.1, users will see the following functionality:

1. Desktop shortcut icon will update to Engage:



2. Users will see Mind Map as an available tool.

NOTE: Users will not be able to create a mind map until a data architect has created and published a sandbox. Until then, they will see an error:



4. Data architect should create and publish a sandbox on the web

A sandbox must be created and published any time a new template is made available. Mind maps are no different – in order for users to use a mind map, your subscription must first have the mind map template added to it by creating a new sandbox and then publishing it.

If your subscription already has an active sandbox, that sandbox must either be published or discarded. Then, create a new sandbox to get the new mind map template, and finally publish the sandbox to make it available to all users.